

Human Identification Using Periocular Biometrics

P.Fasca Gilgy Mary¹, P.Sunitha Kency Paul², J.Dheebea³

Abstract—Biometrics provides a secure method of authentication and identification. Biometric data are difficult to replicate and steal. Unique identifiers include fingerprints, hand geometry, earlobe geometry, retina and iris patterns, voice waves, DNA, and signatures. This paper is based on Periocular biometric recognition, which is the appearance of the region around the eye. Periocular recognition may be useful in applications where it is difficult to obtain a clear picture of an iris for iris biometrics or a complete picture of a face for face biometrics. Acquisition of the Periocular biometrics does not require high user cooperation and close capture distance. This region usually encompasses the eyelids, eyelashes, eyebrows, and the neighbouring skin area. Periocular biometrics encompasses the information of face recognition and iris recognition system. In this paper, the Local Binary Pattern (LBP) and Histogram of Oriented Gradients (HOGs) are used for the feature extraction on the Periocular images. LBP is a type of feature used for classification in computer vision and a powerful feature for texture. HOGs are used for the purpose of object detection using gradient features. For an effective classification and recognition of an authorized individual Back propagation neural network (BPNN) classifier is used.

Index Terms— Periocular Recognition, Local Binary Pattern (LBP), Histogram of Oriented Gradients (HOGs), Backpropagation Neural Network (BPNN), Biometrics.

I. INTRODUCTION

Biometric systems are applied for the unique identification of an individual by evaluating one or more distinguishing biological traits. Authentication plays a major role as a first line of defense against intruders. The number of systems that have been compromised is ever increasing and biometric verification is any means by which a person can be uniquely

identified by evaluating one or more distinguishing biological traits. Periocular biometric recognition is based on the appearance of the region around the eye. The performance of iris recognition is affected if iris is captured at a distance, also affected for subjects who are blind or have cataracts and the performance of face recognition is affected by lighting changes, hair of the person, the age and if the person wear glasses. Periocular recognition [1] is useful in applications where it is difficult to implement the iris and the face biometrics. Acquisition of the Periocular biometrics does not require high user cooperation and close capture distance. In the existing work, After capturing the periocular region, feature extraction method is done using Local binary pattern (LBP), Histograms of Oriented Gradients (HOGs) and Scale Invariant Feature Transform (SIFT). The human and the machine performance are analyzed based on these algorithms and this not a complete automated system. In this manual intervention is required for the recognition of the features that is obtained using those algorithms.



Figure 1 Original Left and Right Periocular Images

Davide Maltoni and Rafia Cle Cappelli (2008) described Fingerprint Recognition using Minutiae based approach [2]. Fingerprints have been using for over a century. It can be used in forensic science to support criminal investigations, biometric systems such as civilian and commercial identification devices for person identification. A fingerprint is comprised of ridges and valleys. The ridges are the dark area of the fingerprint and the valleys are the white area that exists between the ridges. The fingerprint of an individual is unique and remains unchanged of over a lifetime. Minutiae are the most popular approach that is used for fingerprint representation.

K.W.Bowyer et al (2008) proposed a survey of image understanding for iris biometrics [3]. Biometric methods based on the spatial pattern of the iris are believed to allow very high recognition accuracy. The iris colored annular ring that surrounds the pupil. Iris images acquired under infrared

Manuscript received April 18, 2013.

P. Fasca Gilgy Mary, PG Scholar/CSE, Noorul Islam Centre for Higher Education, Thuckalay, TamilNadu, India, Tel:+919443155933 .

P.Sunitha Kency Paul, PG Scholar/CSE, Noorul Islam Centre for Higher Education, Thuckalay, TamilNadu, India, Tel: +91 9677718759.

J.Dheebea, Assistant Professor/CSE, Noorul Islam Centre for Higher Education, Thuckalay, TamilNadu, India, Tel: +91 9442009711.

illumination consist of complex texture pattern with numerous individual attribute which allow for highly reliable personal identification.

W.Zhao et al (2003) described a survey of face recognition in [4]. Humans have a remarkable ability to recognize fellow beings based on facial appearance. So, face is a natural human trait for automated biometric recognition. Face recognition systems typically utilize the spatial relationship among the locations of facial features such as eyes, nose, lips, chin, and the global appearance of a face. The forensic and civilian applications of face recognition technologies pose a number of technical challenges both for static mug-shot photograph matching to unconstrained video streams acquired in visible or near-infrared illumination. The problems associated with illumination, gesture, facial makeup, occlusion, and pose variations adversely affect the face recognition performance. While face recognition is non-intrusive, has high user acceptance, and provides acceptable levels of recognition performance in controlled environments.

J.R.Lyle et al (2010) proposed soft biometric classification using periocular region features in [5]. The focus is on gender and ethnicity classification of individuals using periocular images. The core is to focus whether periocular images carry enough information to reliably obtain similar soft biometric information to that obtained from face images. This paper describes a soft biometric classification approach using appearance based periocular features. The soft biometric information thus obtained can be effectively used for improving the performance of existing periocular based recognition approaches.

D.L.Woodard et al (2010) described periocular region appearance cues for biometric identification in [6]. The low-level features extracted from the periocular region can be effectively used for identification. The chief novelty in this work lies in our use of only the level-two periocular features based on skin texture and color information to perform identification. To this effect, mask the eye in the periocular region thus removing the iris and various level-one features. Although removal of the eye from a periocular region image may seem like a heavy loss of discriminating information, it could be potentially advantageous as the level-one features are highly sensitive to the opening and closing of the eyes and may end up influencing the texture features adversely.

II. MATERIALS AND METHODS

A record of a person's unique characteristic is captured and kept in a database. Later on, when identification verification is required, a new record is captured and compared with the previous record in the database. If the data in the new record matches that in the database record, the person's identity is confirmed. After capturing the Periocular region, feature extraction methods such as Local Binary Pattern (LBP) and Histogram of Oriented Gradients (HOGs) are used on the Periocular images, to capture the texture and the gradient information.

A. Database

The databases are acquired with a Nikon Coolpix S70 and Nikon Coolpix S4000. The periocular images are obtained

from 20 subjects, by manually cropping the periocular images with the size of 512X512 pixels. Both the left and the right periocular images are used for the experiment.

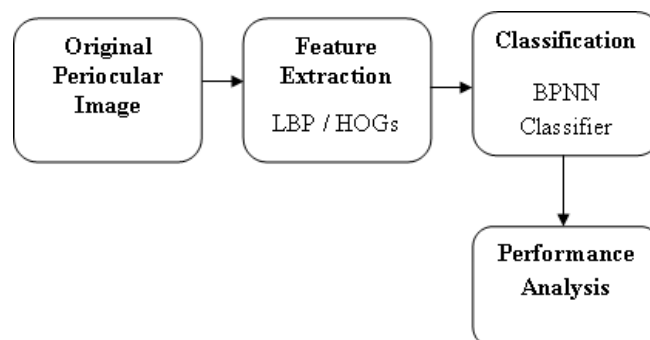


Figure 2 Block diagram of proposed biometric system

B. Feature Extraction

The features from the periocular region are extracted using efficient algorithms. The algorithm [10] which is used for feature extraction is Local Binary Patterns (LBP) and Histogram of Oriented Gradients (HOGs).

Local Binary Pattern

A local binary pattern (LBP) is a type of feature used for classification in computer vision. LBP [7] is found to be a powerful feature for texture classification improves the detection performance. Before performing LBP to the input image the original periocular image is converted into grayscale image.

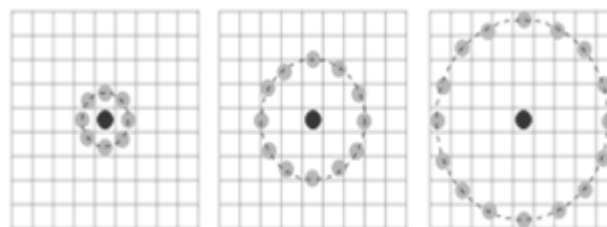


Figure 3 Three Neighborhood examples used to define a texture and calculate a local binary pattern (LBP)

The LBP feature vector is created by,

- Divide the examined window into cells.
- For each pixel in a cell, compare the pixel to each of its 8 neighbors, follow the pixels along a circle
- Where the center pixel's value is greater than the neighbor, write "1". Otherwise, write "0". This gives an 8-digit binary number and is converted into decimal code.
- Compute the histogram, over the cell, of the frequency of each "number" occurrence.
- Optionally normalize the histogram.

- Concatenate normalized histograms of all cells which give feature vector of examined window.

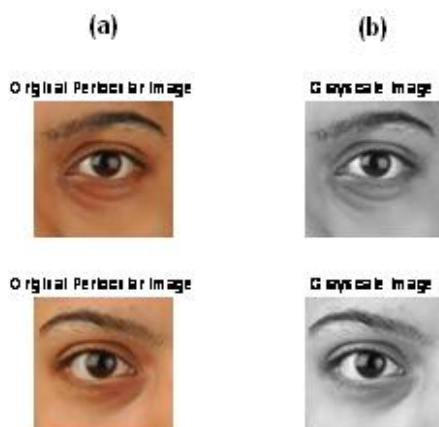


Figure 4 (a) Original Periocular Image (b) Gray Image

The decimal form of the resulting 8-bit word (LBP code) can be expressed as follows:

$$LBP(x_c, y_c) = \sum_{n=0}^7 s(i_n - i_c) 2^n \quad (1)$$

where i_c corresponds to the grey value of the center pixel (x_c, y_c) , i_n to the grey values of the 8 surrounding pixels.

The function $s(x)$ is defined as:

$$s(x) = \begin{cases} 1, & x \geq 0 \\ 0, & x < 0 \end{cases} \quad (2)$$

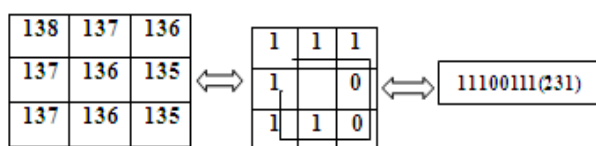


Figure 5 LBP operator

Histogram of Oriented Gradients

Histogram of Oriented Gradients (HOGs) are feature descriptors used in computer vision and image processing for the purpose of object detection. The technique counts occurrences of gradient orientation in localized portions of an image. HOG [11] is a standard image feature used, among others, in object detection and deformable object detection. It decomposes the image into square cells of a given size,

computes a histogram of oriented gradient in each cell and then renormalizes the cells by looking into adjacent blocks.

HOG divides the input image into square cells of size, fitting as many cells as possible, filling the image domain from the upper-left corner down to the right one. For each row and column, the last cell is at least half contained in the image. The essential thought behind the Histogram of Oriented Gradient descriptors is that local object appearance and shape within an image can be described by the distribution of intensity gradients or edge directions.

The implementation of these descriptors can be achieved by dividing the image into small connected regions, called cells, and for each cell compiling a histogram of gradient directions or edge orientations for the pixels within the cell. The combination of these histograms then represents the descriptor. For improved accuracy, the local histograms can be contrast-normalized by calculating a measure of the intensity across a larger region of the image, called a block, and then using this value to normalize all cells within the block. This normalization results in better invariance to changes in illumination or shadowing.

The HOG descriptor maintains a few key advantages over other descriptor methods. Since the HOG descriptor operates on localized cells, the method upholds invariance to geometric and photometric transformations, except for object orientation. Such changes would only appear in larger spatial regions. The HOG descriptor is thus particularly suited for human detection in images.

C. Classification of periocular image

Once the features are extracted from the periocular images for the recognition of an individual similarity measure is used. Due to the illumination in the images an intelligent technique is needed for the effective recognition. For that purpose a neural network classifier is used. A neural network classifier based on Backpropagation training is used for the classification and the recognition of an authenticated individual.

Feed Forward Neural Network

The feed forward neural network, or perceptron, is a type of neural network first described by Warren McCulloch and Walter Pitts in the 1940s. Feedforward Neural networks can be used for classification and regression. The feed forward neural network[8] is trained with the Backpropagation training technique, which uses weighted connections from an input layer to zero or more hidden layers, and finally to an output layer.

Feedforward networks remember what they learn by adjusting weights between the neurons. Feedforward neural network is an interconnection of perceptrons in which

data and calculations flow in a single direction, from the input data to the outputs. The number of layers in a neural network is the number of layers of perceptrons.

Architecture

In a feed forward neural network, data enters at the inputs and passes through the network, layer by layer, until it arrives at the outputs. During normal operation, that is when it acts as a classifier, there is no feedback between layers. This is why they are called feed forward neural networks. Figure 6 shows a typical feed forward neural network.

The number of neurons in input layer and the output layer depends on the application. The hidden layers and the neurons in the hidden layer are chosen generally by "rules of thumb" that can be used to assist making these decisions. In nearly all cases some experimentation will be required to determine the optimal structure for feed forward neural network.

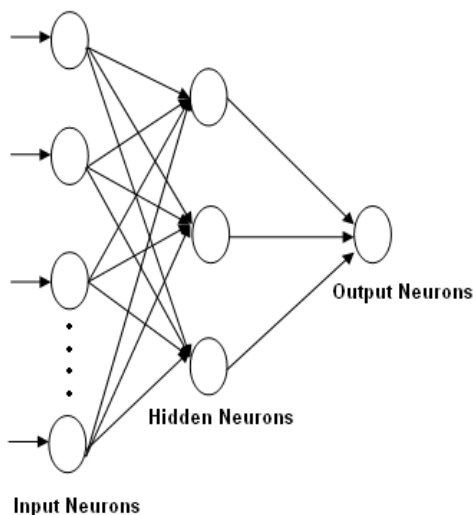


Figure 6 Architecture of Feed Forward Neural Network

The input layer should represent the condition for which the neural network is trained for. Every input neuron should represent some independent variable that has an influence over the output of the neural network.

The output layer determines the actual output of the application used. The neurons in the hidden layers decide the best network architecture and hence the neurons should be chosen optimally. An optimal network can be constructed if the number of hidden neurons is less than twice the input layer size. Ultimately the selection of the architecture of the neural network will come down to trial and error.

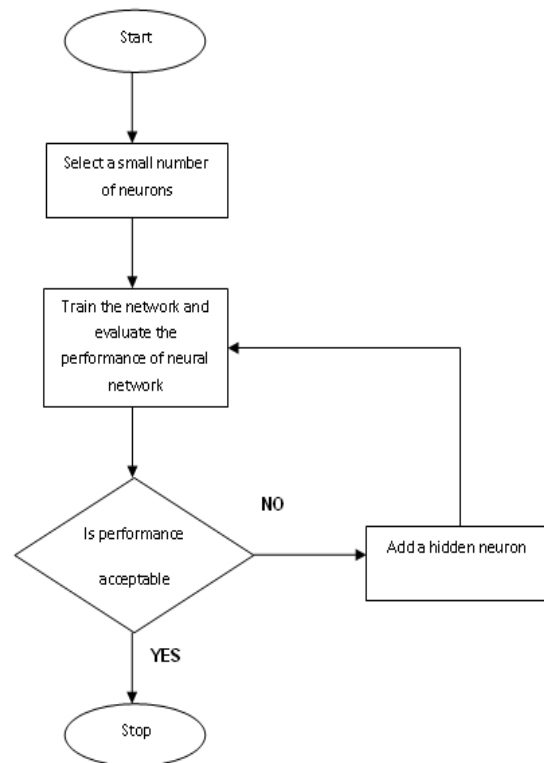


Figure 7 Flow chart for Feed Forward Neural Network

Operation

The operation of this network can be divided into two phases.

Learning using Backpropagation

Backpropagation [9] training procedure is used for feed forward neural networks. Its primary objective is to provide a mechanism for updating connected neurons based upon minimization of error. To accomplish this, gradient descent is generally used to determine the steepest path toward the minimum of

$$E(\vec{w}) = \frac{1}{2} \sum_{d \in D} ((t_d - o_d)^2) \quad (3)$$

where d is a training instance in D , t_d is the target value, o_d is the output value, and \vec{w} is the weight vector.

Backpropagation requires determining an error by first feedforwarding inputs into the network and subtracting the result from some target output. This difference is then multiplied by the derivative of the neuron's activation function, in this application sigmoid function is used. After each error term is calculated, the weights are updated by the multiplication of each branch's output with the forward node's error and the learning rate.

Classification using FFNN

In the classification phase, the weights of the network are fixed. A pattern, presented at the inputs, will be transformed from layer to layer until it reaches the output layer.

The classification can occur by selecting the category associated with the output unit that has the largest output value. The periocular images are classified using the FFNN trained using backpropagation algorithm. The periocular images are first converted into a gray image and the local binary patterns are extracted from the gray image.

A Euclidean distance is calculated with the query image and the images in the database and the corresponding output is obtained. In certain situations, the algorithm does not recognize the accurate periocular images because of the skin aging. Hence, an intelligent classifier is needed to recognize the periocular images with much accuracy and efficiency. A neural network classifier is used to classify the authenticated persons.

The number of input neurons fed to the classifier depends on the similarity measures obtained using Euclidean distance measure. One hidden layers is chosen and the number of neurons in the hidden layer is set to 70.

The output layer shows the authenticated periocular image. The hidden layer neurons is activated using a sigmoid activation function given as,

$$f(x) = \frac{1}{1+e^{-x}} \quad (4)$$

The output layer neuron is activated by using a linear activation function. The images in the database are separated into training and testing images. The 15 periocular images of both right and left eyes are given for training and for the purpose of testing the whole images in the database is given. The pseudocode for the periocular image classification system is given below,

```

Assign all network inputs and output
Initialize all weights with small random numbers, typically between -1 and 1
Repeat
  For every pattern in the training set  $(x_i, y_i)$ 
    Present the pattern to the network
    For each neuron in the input layer
      Calculate the weight sum of the inputs to the node
      Add the threshold to the sum
      Calculate the activation for the node
    End
    For every node in the output layer
      Calculate the error signal
    End
    For all the neurons in the hidden layer
      Calculate the node's signal error
      Update each node's weight in the network
    End
    Calculate the Error Function
  End
  While ((maximum number of iterations < than specified)
  OR (Error Function is > than specified))

```

III EXPERIMENTAL RESULTS

The images are preprocessed from various subjects and the periocular images are manually cropped and are stored in the database which is used for the recognition of an authorized person. The Query images are imported and are converted into gray scale image because the feature extraction methods are applied to the grayscale images. LBP which is an efficient algorithm and the parameters used are,

$$P = 8 \text{ (P->Number of Sampling Points)}$$

$$R = 3 \text{ (R->Radius)}$$

LBP preprocess the input periocular image and is represented with its texture patterns given by the LBP operator at each pixel location and the histogram of the Query Image and the LBP is given in the (Figure 8).

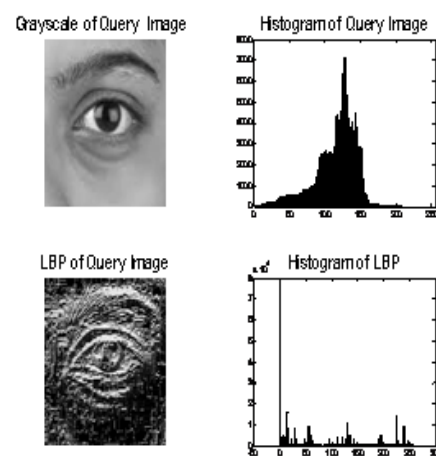


Figure 8 LBP image and its Histogram

Backpropagation method is to train neural network in which the initial system output is compared to the desired output, and the system is adjusted until the difference between the two is minimized. The error rate while training backpropagation is shown in (Figure 9)

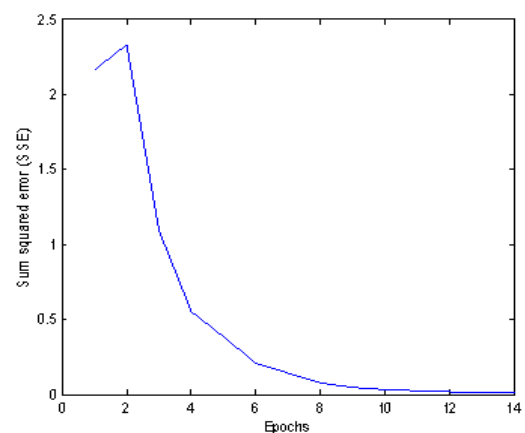


Figure 9 Error Rate of BPNN

The final output that is the given query image should be recognized as the authorized or an unauthorized image by comparing the query image with the images that is stored in

the database that is already collected and stored. The query image given is recognized as the authorized image and the recognized image given in (Figure 10)

Recognized Image



Figure 10 Recognized Image

The recognition rate for the periocular images are tabulated in (Table 1) by considering only the Left Periocular Image (LPI), only Right Periocular Image (RPI) and by combining both the LPI and RPI.

Table 1 Recognition Rate of the periocular images

The Performance chart is represented in (Figure 10). By this chart it is shown that the feature extraction methods along

	Recognition Rate (in %) for P=8, R=3		Recognition Rate (in %) for P=16, R=4	
	LBP & HOG	LBP, HOG & BPNN	LBP & HOG	LBP, HOG & BPNN
LPI	83	88	73	77
RPI	85	90	75	79
LPI & RPI	89	91	80	82

with the similarity measure provides the better recognition. The recognition accuracy reduces due to the illumination in the images. Due to this, effective recognition training is given by the BPNN classifier which provides very high recognition accuracy. A chart is prepared based on the recognition rate with different P and R values. The recognition accuracy of Left Periocular Image (LPI), Right Periocular Image (RPI) and both LPI&RPI is measured with LBP&HOG alone and also with LBP, HOG&BPNN.

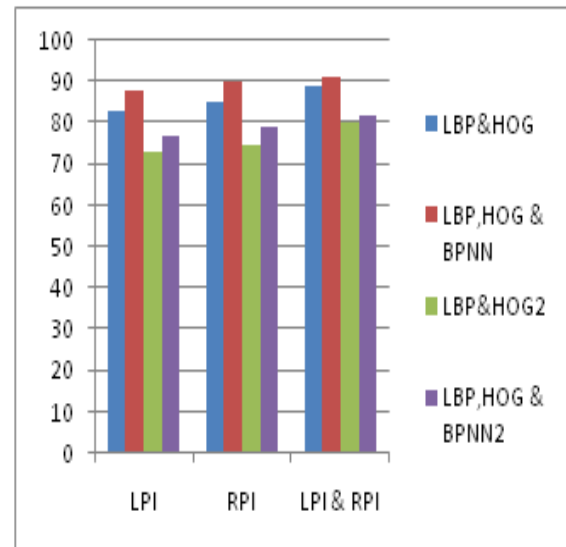


Figure 11 Performance Analysis

IV CONCLUSION

In this work Periocular region which is used as the biometrics for the efficient recognition of an authenticated individual. Periocular recognition encompasses both the face and the iris biometrics. Acquisition of the Periocular image does not require high user cooperation and close capture distance. The features from the periocular region are extracted using feature extraction methods like Local Binary Pattern and Histogram of Oriented Gradients. For the intelligent recognition of an authenticated individual and to make completely automated biometric system an effective classifier is used. Backpropagation neural network classifier is used for effective classification and recognition of an authenticated individual. High Recognition accuracy of 91% is achieved in this proposed work when compared with the existing work.

Future research in periocular biometrics can be done by adding more features for the recognition of an individual and various classifiers can be used to increase the identification performance.

ACKNOWLEDGMENT

The author would like to thank the anonymous reviewers for their valuable comments.

REFERENCES

- [1] Karen P. Hollingsworth, Shelby Solomon Darnell, Philip E. Miller, Damon L. Woodard, Kevin W. Bowyer and Patrick J. Flynn (2012) "Human and Machine Performance on Periocular Biometrics Under Near-Infrared Light and Visible Light" in *IEEE transactions on Information Forensics and security* Vol. 7, No. 2, pp. 588-601.

- [2] Davide Maltoni and Rafiaele Cappelli (2008) "Fingerprint Recognition" *Handbook of Biometrics*, pp.23-42.
- [3] K. W. Bowyer, K. P. Hollingsworth, and P. J. Flynn (2008) "Image understanding for iris biometrics: A survey," *Computer Vision and Image Understanding*, Vol. 110, No. 2, pp. 281–307.
- [4] W. Zhao, R. Chellappa, P. J. Phillips, and A. Rosenfeld (2003) "Face recognition: A literature survey," *ACM Computing Surveys*, Vol. 35, No. 4, pp. 399–458.
- [5] J. R. Lyle, P. E. Miller, S. J. Pundlik, and D. L. Woodard (2010) "Soft biometric classification using periocular region features," in *IEEE Int. Conf. on Biometrics: Theory, Applications, and Systems*, pp. 1–7.
- [6] D. L. Woodard, S. J. Pundlik, J. R. Lyle, and P. E. Miller (2010) "Periocular region appearance cues for biometric identification," in *IEEE Computer Vision and Pattern Recognition Biometrics Workshop*, pp. 162–169.
- [7] Ahonen, T., Hadid, A., Pietikainen, M., 2006. "Face description with local binary patterns application to face recognition" *IEEE Trans. Pattern Anal. Mach. Intell.* 28 (12), 2037–2041
- [8] "Feed Forward Neural Network", <http://en.wikipedia.org/wiki/feedforwardneuralnetwork>.
- [9] Leonard, J. and Kramer, M. A. (1990) "Improvement of the Backpropagation Algorithm for Training Neural Networks", *Computers Chem. Engng.*, Volume 14, No 3, page 337-341.
- [10] Guillaume Heusch, Yann Rodriguez and Sébastien Arcelheusch, rodrig, "Local Binary Patterns as an Image Preprocessing for Face Authentication" IDIAP Research Institute, Martigny, Switzerland Ecole Polytechnique Fédérale de Lausanne (EPFL), Switzerland.
- [11] Navneet Dalal, Bill Triggs (2005) "Histograms of Oriented Gradients for Human Detection," in *IEEE Computer Society Conference on Computer Vision and Pattern Recognition*- Volume 1, p.886-893, June 20-26.

AUTHOR BIOGRAPHY

P.FASCA GILGY MARY was born on 13th February 1987 is a native of Nagercoil, Kanyakumari District. She graduated in B.E Computer Science and engineering from Jayaraj Annapackiam CSI College of Engineering, Nazareth under Anna University in 2008. Currently she is pursuing M.E Computer Science and Engineering in Noorul Islam Centre of Higher Education, Thuckalay. Her research interests include Wireless Communication, Data mining, Image processing.

P.SUNITHA KENCY PAUL was born on 11th February 1990 is a native of Kumaracoil, Thuckalay, Kanyakumari District. She graduated in B.E Computer Science and engineering from Jayamatha Engineering College, Aralvoimozhi under Anna University in 2011. Currently she is pursuing M.E Computer Science and Engineering in Noorul Islam Centre of Higher Education, Thuckalay. Her research interests include Wireless Communication, Data mining, Image processing.

J.DHEEBA, received the B.E degree in Computer Science and Engineering from Anna University, Chennai in the year 2005 and M.E degree in Computer Science and Engineering from Anna University, Chennai in the year 2007. She is now an Assistant Professor at Noorul Islam University, India and currently working towards the Ph.D degree as a part time scholar in the department of Information and Communication Engineering, Anna University, India. Her research interest includes Medical Image Processing, Soft Computing and Artificial Intelligence.