

MONITORING OF LAND RESOURCES AND THEIR TEMPORAL UTILIZATION IN ELLENABAD BLOCK OF SIRSA DISTRICT USING REMOTE SENSING & GIS TECHNIQUES

Sandeep Kumar, Pardeep Kumar, Chander Shekhar

Abstract—The pressures on the natural resources have tremendously increased over years by man's greed for commercialization and livelihood of local people. Devoid of regeneration, population and wide scale tree felling depleted the natural re-sources to a level, which posed a problem for the very sustenance of man. Therefore, it is imperative to understand the consequences of manmade initiatives and to devise proper strategies to counteract these detrimental effects to keep a balance of the environment, ecology, green cover, and human livelihood. Since time immemorial Environment and Development are going together as two wheels of cart. The monitoring of resource and temporal utilization through the multi-temporal IRS-P6 AWiFS satellite data provides detailed information about the land use land cover changes. This paper explores the temporal composition of the main Land-use/Land-cover (LULC) categories, examines the spatial configuration of the categories, and derives the probabilities of transitions in the Ellenabad block of Sirsa district, Haryana.

The present study aims to investigate the monitoring of resource and temporal utilization using multi-temporal IRS P6 AWiFS satellite data (2007- 2009-10) of Ellenabad block of Sirsa district and to identify the hot spots of land use changes pertaining to various categories. At the same time, land use and land cover transfer matrixes are used to assess the dynamic change trends for different land cover types.

Double crop class covered 447.58 sq. km area in 2007 & 450.77 sq. km area in 2009-10. Double crop is the dominant class in both years i.e. 2007 and 2009-10 in Ellenabad block.

Keywords: Resource monitoring, Temporal utilization, AWiFS satellite data, Land use/ land cover, Geospatial technology.

I. INTRODUCTION

Land is the basic, fixed and limited natural resource. Land plays the key role in the determination of man's economic activities as well as social and cultural progress. All agricultural, animal and forestry productions depend on the quality and productivity of the land. Several plans and policies have been formulated and implemented to eradicate the age old land use system in the state by providing the farmers with alternative solutions and amenities. These policies had basic objectives for improving the rural economy and the temporal utilization of natural resource. A policy

with a coherent approach for balancing productivity and conservation practices through constant monitoring and identification of problem areas will go a long way in ensuring sustained utilization of natural resources.

The application and integration of multi-sources of information represent a major goal to achieve more satisfactory results in the assessment of many environmental issues. The use of new technologies and science developments such as Remote Sensing, Geographic Information System, field data collection and database development have made it possible to approach the study of land use land cover and its impact from a multi-disciplinary perspective. Remote Sensing, currently offers an important tool to the synoptic and timely evaluation of natural resources over large areas. Geographic Information System (GIS) has emerged as a powerful tool for handling spatial and non-spatial geo-referenced data for preparation and visualization of input and output, and for interaction with models. Further, various information layers pertaining to the socio-economic can be analyzed and presented in the form which ultimately assists in evolving judicious management and conservation strategies.

The present study aims to analysis the spatial analysis and temporal composition under different LU/LC categories during the period 2007to 2009-10.

II. STUDY AREA

Ellenabad block situated between 29°19'38" to 29°36'35" N latitude and 74°32'13" to 74°58'5 E longitude. The block covers an area of 572.46 sq. km. Ellenabad is situated as an entry point to Haryana, and is 5 KM from Rajasthan. It is surrounded by Rania in the north and Nathusari Chopta block in the east. Climate of Ellenabad block is arid and hot which is mainly dry with very hot summer and cold winter except during monsoon season when moist air entered. The summer starts from mid March to last week of the June followed by the south-west monsoon which lasts till September. The transition period from September to October forms the post-monsoon season. The winter season starts late in November and remains up to first week of March. The normal annual rainfall is 318 mm. The south west monsoon sets in from last week of June and withdraws in

end of September, contributed about 80% of annual rainfall. July and Rest 20% rainfall is received during winter in the wake of western disturbances. During winter i.e. January and February, the temperature goes down sometimes below 2°C. Physiographically it falls under Ghaggar river sub-basin which flows from east to west. The block is formed by aeolian and alluvium plain which has been further divided into many sub geomorphic divisions viz. recent flood plain, nearly level old flood plain, aeolian plain (sand dunes), old flood plain with occasional sand dunes. Location map of study area is displayed in figure-1.

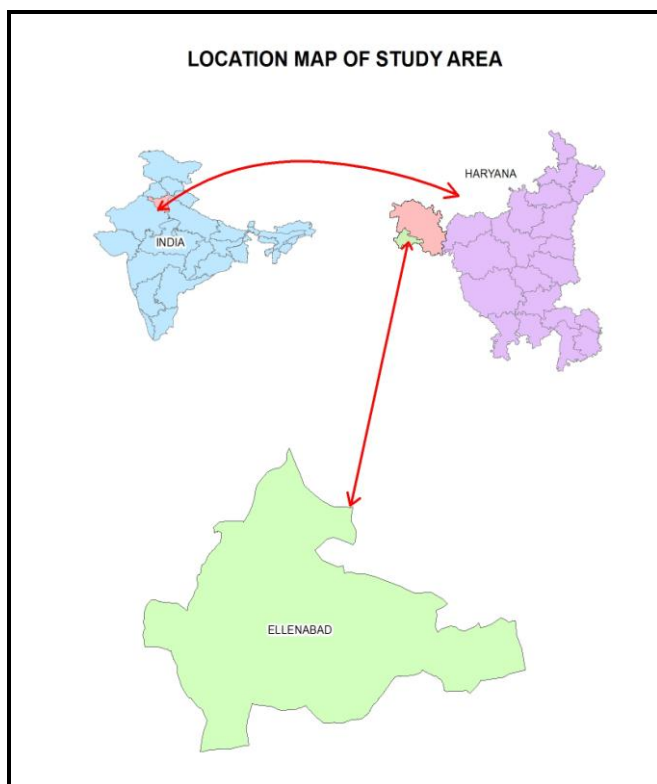


Figure-1

3.2 Software Used

ERDAS IMAGINE 9.3, ARC GIS Desktop 9.3, Microsoft Office 2007.

3.3 Scale

The present change mapping was prepared on 1:50,000 scale to monitor land use / land cover change during the year 2007 to 2009-10.

3.4 Ground Truth

All doubtful areas are checked by field verification. Land use /land cover classification methodology for study area is presented in figure-2 and table-2.

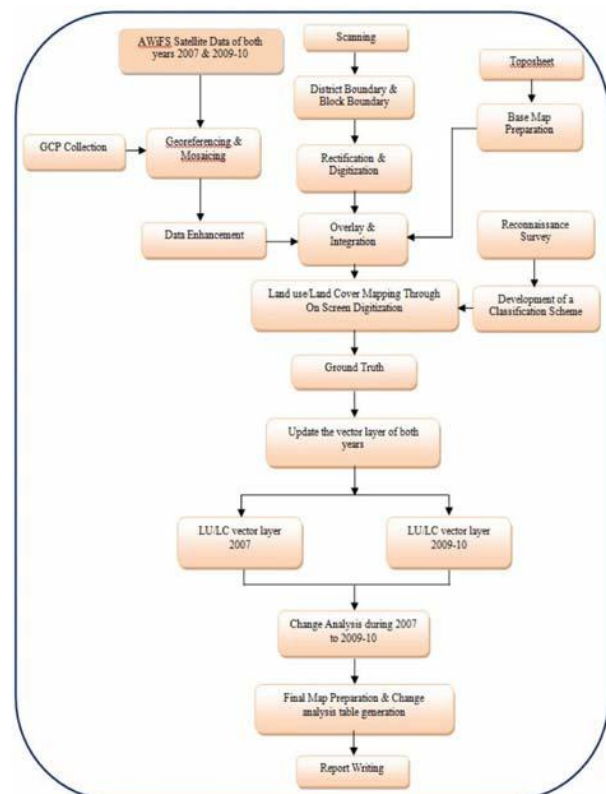


Figure-2

III. MATERIALS & METHODOLOGY

3.1 Satellite Data

Mainly Indian Remote Sensing Satellite P6 – AWIFS satellite data of both rabi and kharif seasons was used for the present study. This satellite data for both seasons & years (2007 & 2009-10) was downloaded from Bhuvan and used to prepare thematic layers. The specification of remote sensing satellite data is given in the table-1.

Table 1: Specification of satellite data used during 2007 and 2009-10

Sr. No.	Satellite	Sensor	Date of acquisition
1	IRS-P6	AWiFS	March 2007 & October 2006
2	IRS-P6	AWiFS	September 2009 & March 2010

IV. RESULTS & DISCUSSION

Ellenabad block covers an area of 572.46 sq. km. Based on the interpretation of two season satellite data, the land use/land cover categories identified in this block were double cropped area, rabi only, kharif only, current fallow, strip plantation, horticultural plantation, degraded grazing land, land with open scrub, sandy area, single/ group building, waterbody and village settlement. The interpreted satellite maps for the years 2007 and 2009-10 are shown as figure-3 & 4. The areal extent of these categories during both the years along with change in their area is given in table-3.

Table-2. Codification of classification system

Level-I	Level-II	Level-III	Code
Built up	Rural	Village (Rural)	1
		Single/Group Building	2
	Urban	City (Urban)	3
Agricultural Land	Cropland	Kharif only	4
		Rabi only	5
		Double cropped	6
	Fallow land	Current Fallow	8
Plantation	Agricultural Plantation	Strip Plantation	9
		Horticultural Plantation	10
	Block Plantation	Block Plantation	11
		Bund plantation	12
Wastelands	Scrub lands	Land with open scrub	13
		Land with dense scrub	14
	Mining dump	Brick kiln/stone mining dump	15
	Grazing Land	Degraded Grazing land	16
	Waterlogged	Seasonal waterlogged	17
		Permanent waterlogged	18
	Sandy area	Sandy area	19
	Salt affected	Salt affected area	20
Water body	Pond/River	Pond	21

The brief description of various classes is as follows:

Built Up Land: This class is further divided into village, urban built up, single/group building.

Built up Rural & Urban – Out of the total built up rural land or settlement area of Ellenabad block was 3.02 sq. km. in 2007. During the year 2009-10, it was found that there is increase of 5.35 sq. km in the settlement area of these villages i.e. 8.37 sq. km. Built up urban of Ellenabad block was 1.42 sq. km founded in 2007 and in 2009-10, it was increased to 2.03 sq. km.

Single/Group Building – This class includes those buildings which are scattered in the study area and may be the tubewell or poultry farms in the farmers' fields. This class during 2007 was not mapped. In 2009-10, this class covered 0.09 sq. km area.

Agricultural land: Agricultural land may be defined broadly as land used primarily for production of food grains and fodder. This category is further divided into double crop, rabi only, kharif only and current fallow sub-classes.

Double crop- This sub-class includes an area which is cultivated during both rabi and kharif seasons in a year. Double crop is the dominant category in Ellenabad block. The area under this class during 2007 was 447.58 sq. km. whereas it became 450.77 sq. km. in 2009-10. The increment of 3.19 sq. km. is also justified from the decrease of rabi only & strip plantation classes in this block.

Rabi only - The area cultivated only during rabi season and remains fallow during kharif season is classified as rabi only. This class covered an area of 32.82 sq. km in 2007 and 5.07 sq. km in 2009-10. The decrease of 27.75 sq. km. in this category may be due to the shifting of this area in kharif only category.

Kharif only - The area which is cultivated only during kharif season and remains fallow during rabi season is called kharif only. It covered an area of 2.82 sq. km in 2007 and 30.62 sq. km in 2009-10 i.e. a increase of 27.80 sq. km due to decreased the class rabi only.

Current Fallow - Land which is kept fallow in both rabi and kharif seasons due to one or the other reasons falls under this category. An area of 69.28 sq. km. of this class was found during 2007 whereas this class was decreased to 60.54 sq. km. in 2009-10. This class decreased 8.74 sq. km during 2007 to 2009-10.

Plantation: Plantations are the cultivated trees or plants grown in agricultural fields. This category includes Agricultural plantation, Strip plantation and Horticultural plantation classes also.

Agricultural plantation- Agricultural plantation is done around the crop field. Agricultural plantation covered an area of 1.32 sq. km in 2007 and this class not found in 2009-10. Mostly, this class was changed in horticultural plantation class. Horticultural plantation covered 0.29 sq. km. area.

Strip plantation - Strip plantation is mainly done on both sides of roads/ kachcha ways. Strip plantation covered an area of 3.43 sq. km area in 2009-10 and this class was not mapped in 2007. This class increased due to decreased double crop class.

Wastelands: The term wastelands refer to degraded lands that are currently underutilized, and are deteriorating for lack of appropriate soil & water management or on account of natural causes. Wastelands develop naturally or due to influence of environment, chemical and physical properties of the soil or management constraints. These are further divided into Degraded Grazing Land, scrub land and sandy area.

Degraded Grazing Land- These lands are the Panchayat lands, irregular in shape, and are found close to settlement fringes. These lands have degraded due to lack of proper soil conservation and drainage measures. The areal extent of this class during 2007 was 8.51 sq. km and it decreased by 3.55 sq. km. during 2007 to 2011-12 due to increase in settlement area of the villages.

Land with Open scrub- These lands generally occupy topographically high locations and possess sparse vegetation. These are subjected to excessive aridity with scrubs dominating the landscape. These may either occur naturally

or be the result of human activities. This class occupied an area of 3.42 sq. km. in 2007 and 0.82 sq. km. in 2009-10 i.e. decreased of 2.59 sq. km. during this period.

Sandy area- A small area of 0.99 sq. km was found during 2007 in the Ellenabad block. In 2009-10, 0.48 sq. km area was covered by this class. Most of the sandy wastelands have been leveled and put under cultivation.

Water Body: This class includes ponds and lakes present in the study area. Ponds were observed in this block covering an area of 0.98 sq. km. in 2007 and 4.68 sq. km in 2009-10.

Table- 3: Areal extent and change in area of land use/ land cover categories of Ellenabad Block

Land use/Land cover Categories		Area in Sq. km. (2007)	Area in Sq. km. (2009-10)	Change
Built Up Land	Rural	3.02	8.37	5.35
	Urban	1.42	2.03	0.61
	Single Group Building	0	0.09	0.09
Agricultural Crops	Double Crop	447.58	450.77	3.19
	Rabi Only	32.82	5.07	-27.75
	Kharif Only	2.82	30.62	27.80
	Current Fellow	69.28	60.54	-8.74
Plantations	Horticultural Plantation	0.00	0.29	0.29
	Agricultural Plantation	1.32	0.00	-1.32
	Strip Plantation	0.00	3.43	3.43
	Waterbody	0.00	4.68	4.68
Wastelands	Land with Open Scrub	3.42	0.83	-2.59
	Degraded Grazing & Grass land	8.81	5.26	-3.55
	Sand Desertic	0.99	0.48	-0.51
Water body	Waterbody	0.98	4.68	3.70
Total		572.46	572.46	0.00

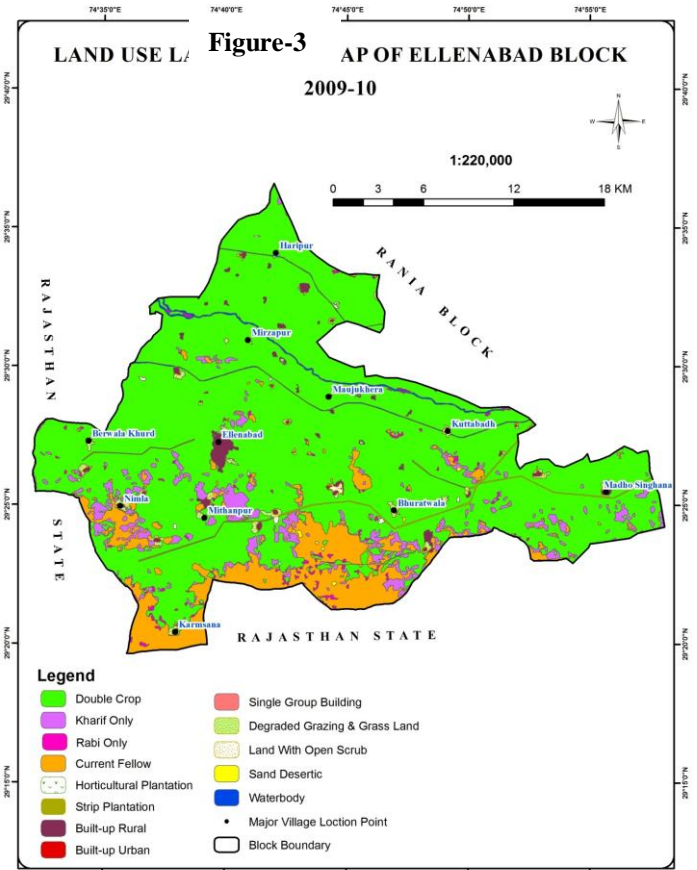


Figure-4

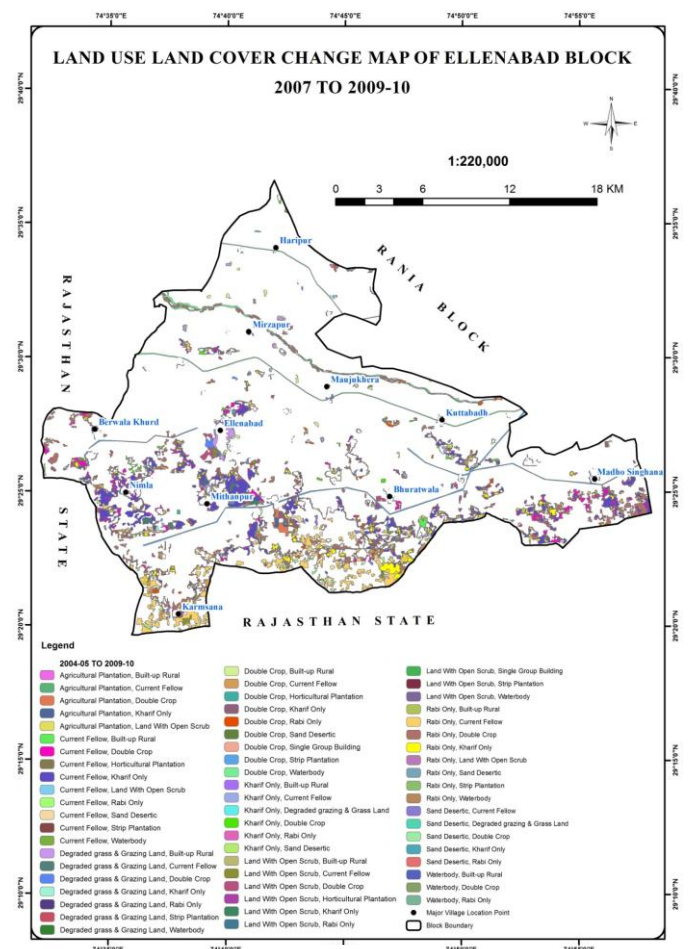
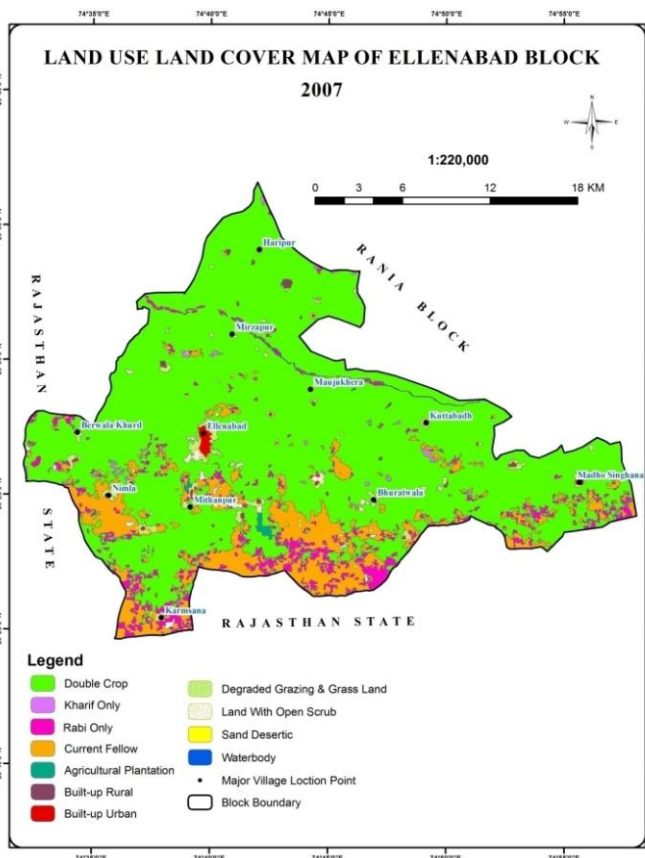


Figure-5



Change Analysis:

A common or union layer was generated on the basis of vector layers of both years 2007 & 2009-10. With this common vector layer, changes between all land use/ land cover categories during 2007 and 2009-10 were calculated as shown in Table-4 and the change map was prepared as shown in Figure-5. The change analysis data shows that 426.22 sq. km. area of double crop remained unchanged but a reasonable area i.e. 3.26 sq. km. area of double crop changed into strip plantation category. 1.44 sq. km. area changed into built up

rural & 2.00 sq. km area of double crop changed into built up urban. 12.84 sq. km. changed in to double crop from rabi only. On the other hand in 2009-10 year data 6.97 sq. km. area of double crop was shifted into kharif only.

Table-4. Category wise change analysis of land use/ land cover classes during 2007 and 2009-10 of Ellenabad Block (Area in sq. km.)

2009-10 \ 2007	Built-up Rural	Built-up Urban	Current Fellow	Degraded grazing & Grass Land	Double Crop	Horticultural Plantation	Kharif Only	Land With Open Scrub	Rabi Only	Sand Deserti c	Single Group Building	Strip Plantation	Waterbody	Grand Total
Agricultural Plantation	0.03		0.05	0.03	0.69		0.50	0.02						1.32
Built-up Rural	3.01						0.00						0.00	3.02
Built-up Urban	1.38	0.03												1.42
Current Fellow	0.45		44.62		6.83	0.01	15.68	0.12	1.04	0.44		0.09	0.00	69.28
Degraded grass & Grazing Land	1.71		0.28	5.23	1.39		0.14		0.02			0.02	0.02	8.81
Double Crop	1.44	2.00	2.20		426.22	0.19	6.97		1.73	0.02	0.06	3.26	3.50	447.59
Kharif Only	0.03		0.33	0.00	1.14		1.09		0.20	0.02				2.82
Land With Open Scrub	0.09		0.65		1.35	0.09	0.53	0.67	0.00		0.03	0.00	0.00	3.42
Rabi Only	0.20		11.85		12.84		5.41	0.02	2.06	0.00		0.05	0.39	32.82
Sand Deserti c			0.57	0.00	0.10		0.30		0.02					0.99
Waterbody	0.02				0.21				0.00				0.76	0.98
Grand Total	8.37	2.03	60.54	4.73	450.77	0.29	30.62	0.83	5.07	0.48	0.09	3.43	4.68	572.46

Conclusions

The present study was conducted to evaluate change analysis of Ellenabad block of Sirsa district by using IRS-P6, AWiFS satellite data of both rabi and kharif seasons for the years 2007 & 2009-10. Ellenabad block cover an area of 832.66 sq. km. The change analysis is based on the changes observed in land use/land cover in study area between 2007 and 2009-10. After going through the final land use/land cover data of both years and the changes occurred during these years, following conclusions were drawn.

[1] Built-up area, agricultural crops, plantation, wastelands & waterbody are major LU/LC classes that were observed in both years 2007 & 2009-10.

[2] Agricultural crop class covered 552.5 sq. km area in 2007 & 547 sq. km area in 2009-10. This class covers 96.51 percentage area of study area in 2007 & 95.55 percentage area of study area in 2009-10.

[3] Built-up area was observed 4.44 sq. km in 2007 that was 0.77 percentages of total geographical area of study area and 10.49 sq. km area was observed in 2009-10 that was 1.83 percentage of total geographical area of study area.

[4] Wastelands class was observed 13.22 sq. km in 2007 that was 2.31 percentages of total geographical area of the Ellenabad block and 6.57 sq. km area was observed in 2009-10 that was 1.15 percentage of total geographical area of the Ellenabad block.

[5] Double crop is the dominant class in both years i.e. 2007 and 2009-10 in study area. The major shifting was observed in rabi only class of 2007 whose 12.84 sq. km area was changed into double crop area during 2009-10. 426.22 sq. km. area of double crop is remains unchanged.

[6] The data reveals that total agricultural area was decreased 5.50 sq. km during 2007 to 2009-10. This is due to increase in built up area & strip plantation classes. Minor changes were also observed in wastelands categories in the study area.

References

[1] Anderson, J. R., Hardy E.T., Roach J.T. and Witmer R.E. (1976). A land use and land cover classification system using remote sensing data. U.S.G.S. Prof. Paper No. 466. pp 1-26.
[2] Anil. N.C; (2011) Land Use/Land Cover and change detection from parts of South West Godavari District, A.P- using Remote Sensing and GIS techniques.
[3] Bossard, M., Feranec, J. and Otahel, J. (2000) CORINE land cover technical guide Addendum 2000. Technical report no 40. Copenhagen: European Environment Agency.
[4] Di Gregorio, A., and Jansen, L.J.M. (2004). Land Cover Classification System. Classification concepts and user manual, version 2.0 Rome: United Nations Food and agriculture organization.
[5] Hooda, R. S; Arya, V. S; Arya, Sandeep; Khatri, S.S; Sharma, Prem Parkash; Singh, Vijay; Sharma, Heena;

Singh, Hardev; Updated Wastelands Atlas of Haryana (2003-2006): Haryana Space Applications centre (HARSAC), Dept. of Science and Technology, Govt. of Haryana.

[6] Hooda, R. S; Arya, V. S; Arya, Sandeep; Khatri, S.S; Singh, Hardev; Kumar, Sandeep; Kumar, Dushyant; Sharma, Prem Parkash; Sharma, Heena; Wastelands Atlas of Haryana (2012): Haryana Space Applications centre (HARSAC), Dept. of Science and Technology, Govt. of Haryana.

[7] <http://bhuvannoeda.nrsr.gov.in/download/download.php>

[8] <http://esaharyana.gov.in/Data/StateStatisticalAbstract/StatisticalAbstract%282011-12%29.pdf>

[9] <http://esaharyana.gov.in/data/StatisticalAbstract.pdf> 2007-08

[10] <http://support.esri.com/en/>

[11] Jayakumar, S. and Arockiasamy, D.I. (2003). Land use/land cover mapping and change detection in part of eastern Ghats of Tamil Nadu using remote sensing and GIS. J. Indian Soc. Remote Sensing 31 : 251-60.

[12] Kerr, J. with Ganesh Pangare, Vasudha Lokur Pangare, and P.J. George (2000). An Evaluation of Dry Land Watershed Development Projects in India, Environment and Production Technology Division, International Food Policy Research Institute 2033, K Street, N.W Washington, D.C. 2006 U.S.A. EPTD Discussion paper no. 68. pp- 1-3

[13] Khorram, S. and John, A.B. (1991). A regional assessment of land use/land cover types in Sicily with Landsat TM data. International Journal of Remote Sensing. 12 (1): 69-78.

[14] Land Record Department, Haryana (2007-2011).

[15] Lillesand, T. M. and Kiefer, R. W., 1987. Remote Sensing & Image Interpretation.

[16] Minakshi K., Sharma, P.K., Kaur, Amandeep, & Shalley, Vanita. (2005), Satellite based study of Landtrans formation in Ludhiana District Punjab Journal of the Indian Society of Remote Sensing 31(1). Pp-63-68.

[17] Sandeep Kumar, Pardeep Siwach; (August 2012) Investigating statistical analysis of canal density & canal network analysis of Hisar district (Haryana) –using remote sensing & GIS; International journal of Physical & Social Sciences (IJPSS), Volume2, Issue8.

[18] Statistical Abstract of Haryana (2007-2008). Economic and statistical advisor, planning department Government of Haryana.

[19] Kumar Anil, Arya V.S., Hooda R.S., Singh Hardev, Kumar Sandeep ; Change analysis of micro-watershed through remote sensing and GIS Bhiwani district, Haryana ; Journal of Environmental Science and Sustainability (JESS) , Vol. 1 (4) 2013, pp: 103-107.